

CURRENT PRACTICE
INSIGHTS into

CARDIOVASCULAR
DISEASE




PHARMO

An experienced sparring partner for all your EU healthcare questions

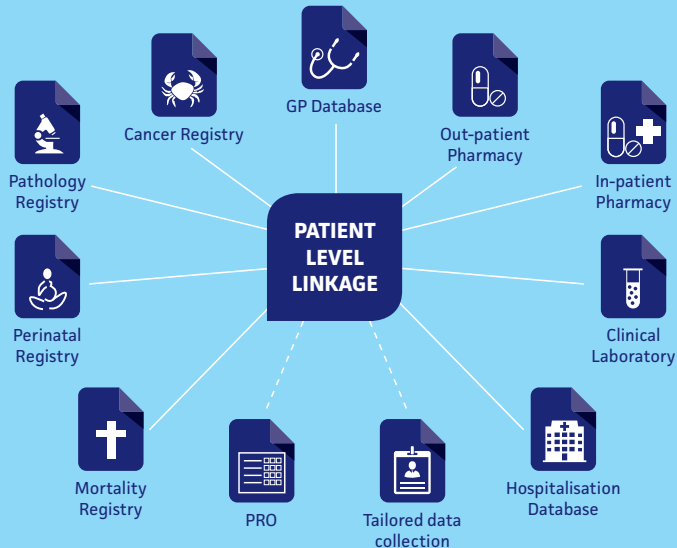
Patient-centric data derived from real-life healthcare settings is a key element in generating evidence for decision-making by healthcare stakeholders. Our clients use this evidence to demonstrate safety, effectiveness and quality of care. PHARMO is specialised in generating this evidence, by means of observational and real-life research with data from current treatment practice. We provide expert data analysis to support regulatory, market access and treatment decisions throughout a product life-cycle.

PHARMO has delivered its tailor-made services for more than 600 late-phase studies across a wide range of therapeutic areas.

For healthcare research using medical data from patients with cardiovascular disease, PHARMO has access to an excellent observational framework by linking data from different healthcare settings in the Netherlands, including data from general practitioners, in- and out-patient pharmacies, clinical laboratories and hospitals.



PHARMO Database Network
Rapid access to primary and secondary healthcare data



We are continuing to expand our capabilities in Europe by collaborating with European healthcare database partners.

Examples of information available

Cardiovascular Disease Cohort

From 2002 onwards

Regularly updated and expanded to include new patients

Diagnoses and symptoms (International Classification of Primary Care (ICPC) codes)

- Cardiovascular disease (e.g. myocardial infarction, angina pectoris, stroke, limb ischemia)

Test results

- Body Mass Index (BMI)
- Systolic and diastolic blood pressure
- Low and high density lipoprotein cholesterol (LDL-C, HDL-C)
- Triglyceride, total cholesterol

Health indicators

- Smoking
- Physical fitness

Healthcare resource information

Innovation by Observation

What can we do for you?

Observational research

- Drug utilisation
 - Lipid lowering treatment patterns
 - Adherence / Persistence
 - Detailed brand information
 - Co-medication (e.g. anti-hypertensive, anti-thrombotic and anti-diabetic treatment)
- Patient characteristics
 - Age, gender, SES
 - BMI / blood pressure
 - Smoking status
- Drug effectiveness
 - Low and high density lipoprotein cholesterol (LDL-C, HDL-C)
- Safety outcomes
 - Cardiovascular outcomes (e.g. ischemic heart disease, stroke)
- Healthcare resource utilisation
 - Medication use
 - Visits to GP
 - Hospitalisations

Additional patient-centric data collection

- Patient reported outcomes (PRO)
- Physician reported outcomes
- Patient monitoring
- Disease management support

Expert consultancy

- Risk management
- Market access
- Clinical trial design

We create tailor-made cohorts and we can collect additional patient-centric data if this suits your needs.

Further information on our various publications and studies in which we are involved can be found on our website: www.pharmo.com

Tell us about your healthcare research questions: pharmo@pharmo.com



WWW.PHARMO.COM